

CONNOR

OVAL UNDERMOUNT SINK

□ 4210CFY Undermount Sink

PRODUCT SPECS:

- Vitreous china
- Front overflow hole
- Template supplied
- Mounting clips not included
- Clips and epoxy can be used (supplied by the installer)

DIMENSIONS:

Outer:

430mm W x 355mm D x 190mm H
17" W x 14" D x 7½" H

Inner:

380mm W x 305mm D x 140mm H
15" W x 12" D x 5½" H

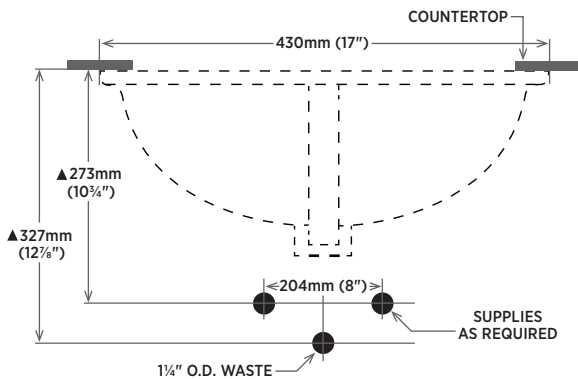
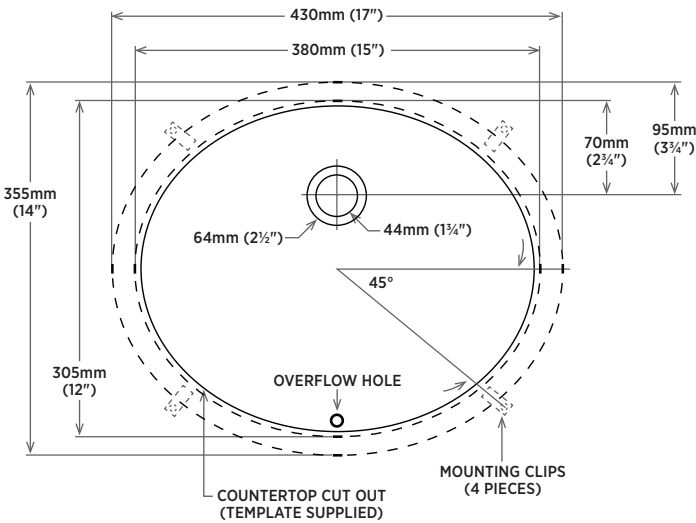
COMPLIANCE CERTIFICATIONS

Meets or exceeds the following:

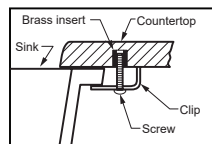
- IAPMO cUPC
- ASME A112.19.2 / CSA B45.1
- ADA Guidelines & ANSI A117.1
- OBC Section 3.8 Barrier Free design and CSA B651 Standard

SHIPPING

Cube 1.11
GW 16 lbs



DETAIL OF MOUNTING CLIP



Note:
▲ Dimensions shown for location of supplies and "P" trap are suggested.



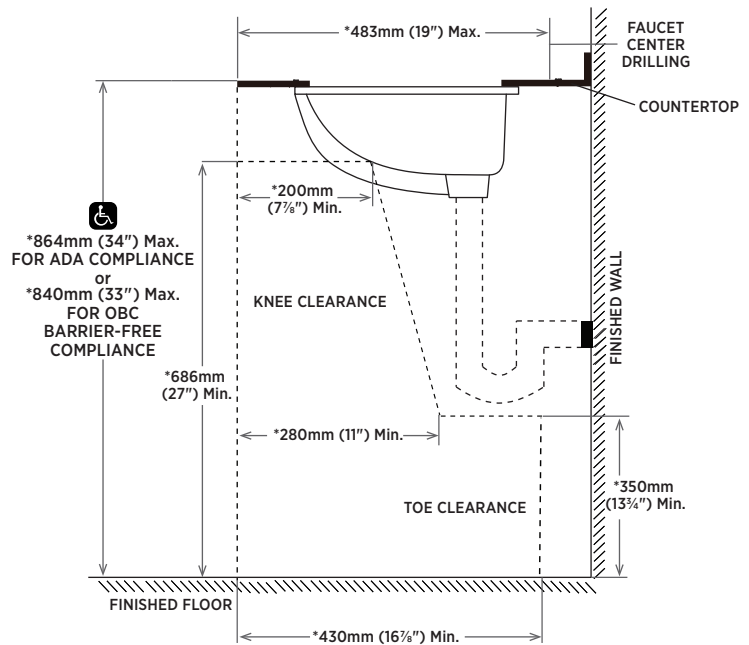
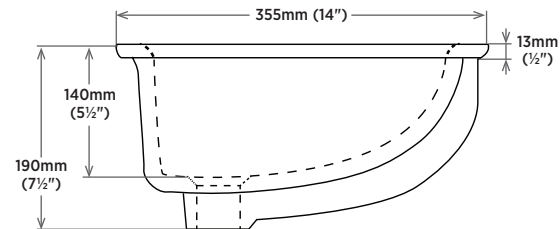
TO BE SPECIFIED

Colour:

■ Soft White

NOTES: Dimensions of fixtures are nominal and may vary within the range of tolerances established by ASME standard A112.19.2. These measurements are subject to change or cancellation. No responsibility is assumed for use of superseded or voided pages.

Products are designed to comply with ADA/ANSI A117.1, CSA B651 Standard and OBC barrier-free requirements. It shall be the responsibility of the installer to comply with the local disability codes and standards prior to installing the product.



NOTE: * Starred measurements comply with ADA and OBC barrier free accessibility requirements.

REVISED OCTOBER 2022

contrac

CANADA
USA

5970 CHEDWORTH WAY, UNIT B, MISSISSAUGA, ONTARIO, CANADA L5R 4G5 | CONTRAC.CA
6241 NORTHWIND PARKWAY, HOBART, INDIANA, USA 46342